

Professional Services

- Roof consulting
- Construction documentation and administration
- Condition assessment reports
- Leak investigations
- Cost estimating
- Hands-on surveys and test probes
- Construction litigation support/Expert witness services
- Facilities maintenance plans
- Materials analysis and selection
- Preservation planning

Steep-Slope Roofing

- Slate
- Wood shingles
- Clay tile
- Standing seam and batten seam copper
- Asphalt shingles
- Flashings
- Rainwater conduction systems

Low-Slope Roofing

- Flat seam copper
- Fluid-applied membrane systems
- Modified bitumen systems
- EPDM
- Flashings
- Roof Drainage

Building Envelope

- Exterior masonry
- Stained and leaded glass
- Architectural woodwork
- Steeple and cupolas
- Parapets, chimneys, and cornices
- Lightning protection systems

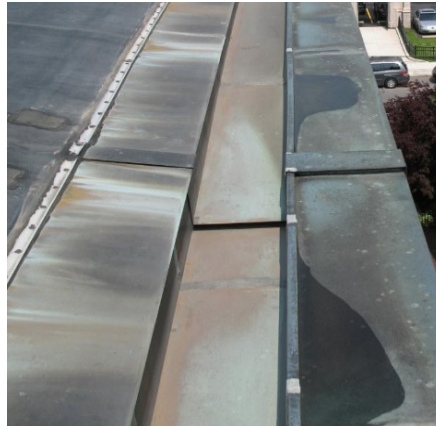
Competence

- Expertise in roofing technology and building pathology
- Holistic approach to identifying and treating deterioration
- Hands-on, up-close surveys from ladders and high reach equipment
- Principal involvement in all projects
- Attention to detail
- Close client collaboration
- Frequent site visits during construction to monitor the work
- Continuously refining our understanding of building technologies

Do it Right, Do it Once

What's Up With That? – What Can Happen When There Is No Roof Consultant

Some not so good results can happen. Here is a smattering of recent examples:



▲ Termination bar fasteners associated with the EPDM roof puncture the apron of the gutter liner, a loose-lock expansion joint is located below the high water line in the gutter, and a coping cap drains to the outside, thereby saturating (and staining) the exterior masonry wall.



▲ No need for a cant, just stick some slate shims in there and hope the sealant will hold them in place.



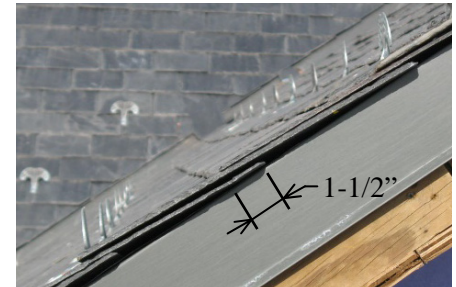
▲ That underlayment is fine, right?



▲ Forgot the cant? No problem. Just add wood blocking below the head of every course to prevent the slates from rocking.



▲ No, the slate is not supposed to look like that!

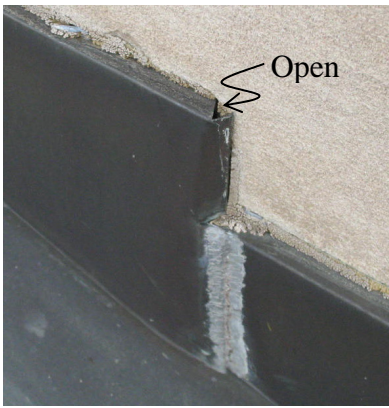


▲ Headlap! We don't need no stinking headlap! Well, Code says you need 3", not 1-1/2" to 2".



▲ You know that's going to pond water and leak. Bolts thru the gutter liner – really!

What Can Happen When There Is No Roof Consultant Cont'd.



Now the blatant marketing pitch: Levine & Company – we add value to projects by accurately assessing existing conditions, making sure the right materials get specified, paying attention to the details in our specs and drawings, working closely with contractors and other design professionals, and making sure things gets done right the first time. That’s what we do – every day, every project.



These counterflashings don’t lap, create a ledge for water to ride back toward the reglet, and are open at the top corner.

Levine & Company News

Jeff has recently served as an expert witness in a number of construction defect cases related to roofing. Since he is getting up there in age and seems to like this kind of work, Levine & Company is now expanding its professional services to include expert witness and construction defect litigation support services.

Julie wrote a two-part article entitled “Slate Roofing: Innovation In An Old Industry” that was published in the January and February, 2017 issues of *Interface*, The Journal of RCI, Inc. The articles discuss recent changes in the industry, including those to codes and standards, materials testing updates, new technical resources, new installation methods, and the growth in underlayment and material choices.

In December, Julie was elected Vice President of RCI, Delaware Valley Chapter, a position from which she will automatically ascend to President in 2018. The Chapter is planning several exciting events this year. Want to learn more? Just give Julie a call!

DLVW/SJW@VVe